

^5 Syracuse University

Operation Safeguard

George Wazen & Sgt. John Stephens
Department of Public Safety



Community Police Academy

The Syracuse University Department of Public Safety (DPS) is proud to launch a community police academy for our students, faculty and staff. The community police academy is a free four-week program designed to give eligible community members an idea of what it's like to protect and serve our campus community.

Featured Topics:

- Public safety operations
- Traffic stops
- Building searches
- Residential security
- Civilian casualty care
- Fire Safety

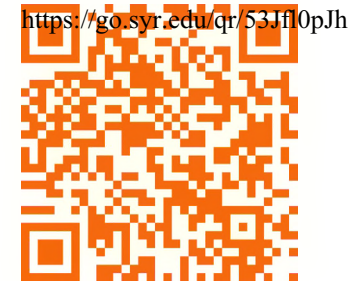
Dates:

- Wednesday, Oct. 5
- Wednesday, Oct. 12
- Wednesday, Oct. 19
- Wednesday, Oct. 26

Times:

5:30 to 8:30 p.m.

Learn more and
apply online:



Department of Public Safety

How to contact DPS:

- **Address:** 130 College Place, 005 Sims Hall, Syracuse, NY 13244
- **24/7 phone number:** 315.443.2224
- **Website:** dps.syr.edu
- **Social media:** @SyracuseDPS
- Safety Escort Shuttle 315.443.RIDE
- **Orange Safe** mobile Safety app **7433**
- <https://subus.syr.edu/>

Syracuse Police Department SPD



Department of Public Safety DPS



Safety Tips for International Students

- When contact with the Police:
 - On a Traffic Stop:
 - Remain in the vehicle, roll down windows and keep hands visible. When the officer approaches, they will ask you to present proper documents, tell the officer where you keep the documents in the vehicle, "Glove Compartment", "Center Console" and that you will be reaching to get them. If you don't agree with the officer's assessment of the situation, you will get your chance to fight it in court.
 - To report an incident or a complaint:
 - Try to be the best witness you can, provide all information, answer all questions to the best of your knowledge.

Securing a Bike or an Electric Scooter

Always use a U-BOLT Lock



Operation Safeguard

- Operation Safeguard - Suspicious Activity Reporting:
 - State-wide public outreach program by law enforcement.
 - Intended to generate public awareness to public and private sectors by providing descriptions of potential criminal and terrorist indicators and suspicious activities.
- DPS is requesting your assistance:
 - Be aware of your surroundings.
 - Report information or circumstances that appear unusual or suspicious to you, your students or your employees.
- “If you see something, say something...”

Operation Safeguard

- Ongoing concern:
 - Recent criminal incidents occurring on and near campus including larceny and burglary.
 - Several recent national incidents, including individuals seeking to commit criminal acts or acts of terrorism while portraying themselves as legitimate customers, students, and/or visitors.

Operation Safeguard

- Goals:

- Early recognition and reporting of potential criminal, terrorist, and/or suspicious activity can serve as the first line of defense against those who intend to cause harm.
- The intent is not to question or infringe upon people's daily routines and way of life, nor to distrust members of the community; but rather to provide a resource to recognize and report behaviors that are suspicious and/or outside the norm.

Operation Safeguard

- Instances of suspicious conduct observed by you, your students, or your employees may not be criminal per se, but peculiar and unusual because it does not match the usual behavior patterns that the campus or your work area routinely experience when dealing with student or visitor activities or requests.
- There are seven behavioral signs to be aware of...

Operation Safeguard - Seven Signs

- 1. Surveillance:** Recording or monitoring activities, taking pictures, making drawings.
- 2. Elicitation:** Attempts to gain information about operations, staffing, and security.
- 3. Tests of Security:** Any attempts to measure reaction times to entering restricted areas.
- 4. Acquiring Supplies:** Obtaining hazardous materials, explosives, weapons, uniforms, badges, credentials, etc.

Operation Safeguard - Seven Signs

- 5. Suspicious Out of Place Persons:** This may include people who are in places they should not be, as well as, people who's behavior does not fit in to the daily routine of the campus, the neighborhood, or the community.
- 6. Dry or Trial Run:** Putting people into position and moving them around without actually committing a terrorist act.
- 7. Deploying Assets:** People and supplies getting into position to commit the act.

Operation Safeguard

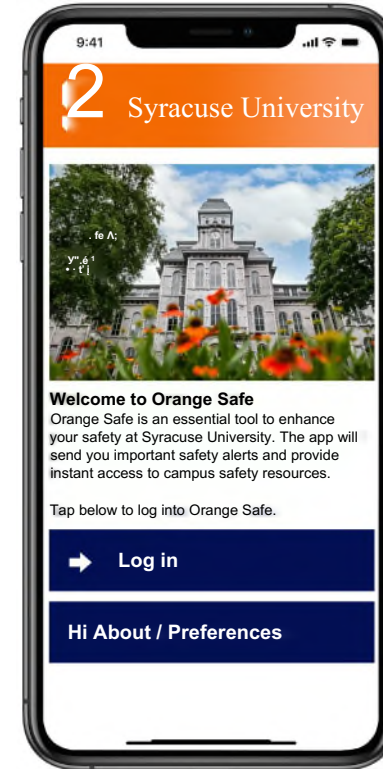
- Contact the Syracuse University Department of Public Safety at:
 - 711 from a campus office or classroom phone
 - 315.443.2224 (you should program this into your cell phone)
 - 711@syr.edu by text message or by email
 - **ORANGE SAFE** mobile safety app! Please download for your iPhone or Android!

Orange Safe

Mobile Safety App

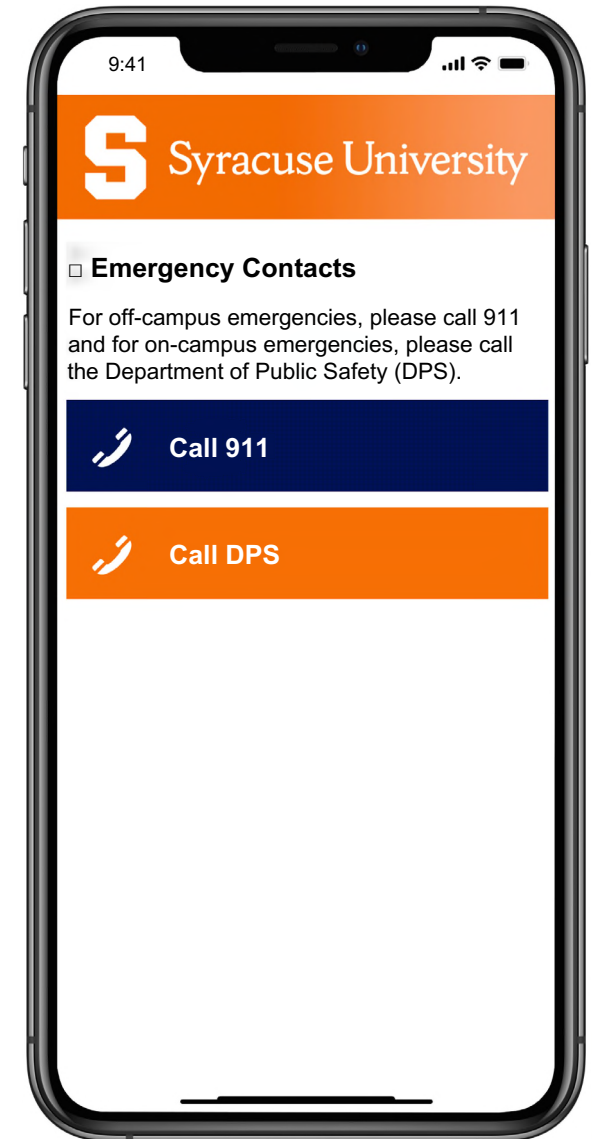
Orange Safe

- Downloadable on the following app stores:
 - iOS
 - Android
- Login with your netid and password



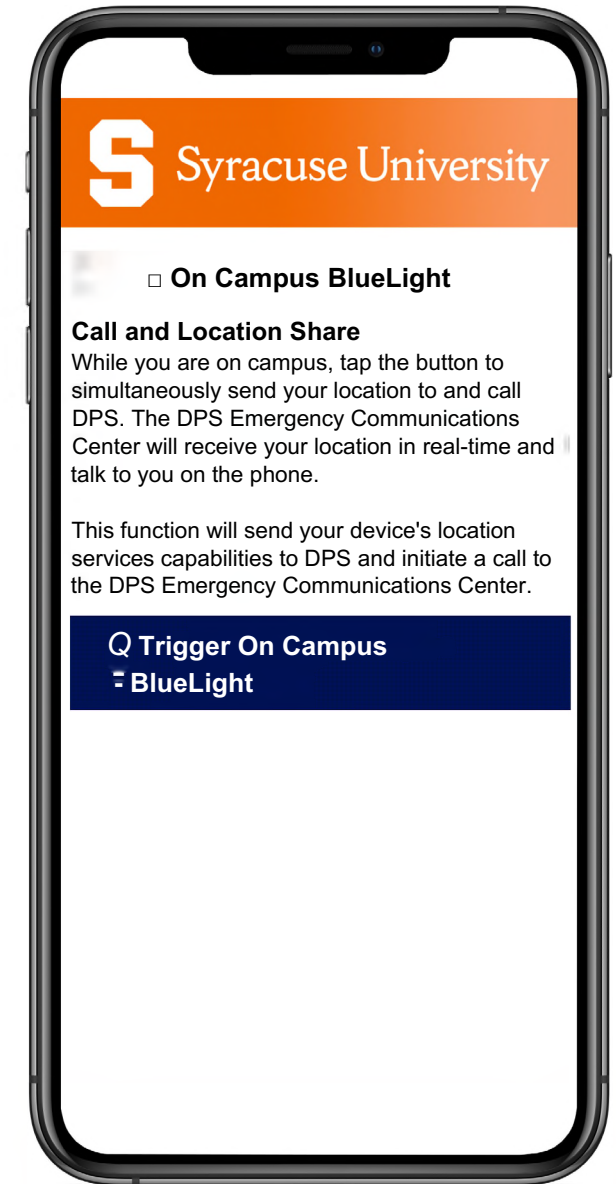
Orange Safe - Emergency Contacts

- For off-campus emergencies call 911
- For on-campus emergencies, call DPS



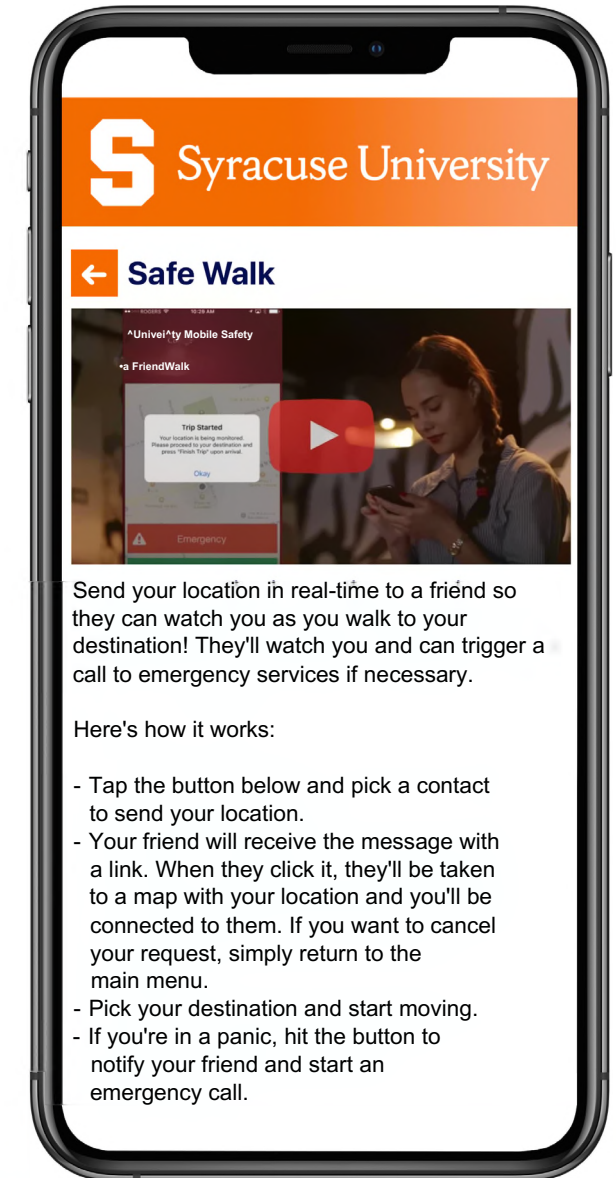
Orange Safe - On Campus BlueLight

- While you are on campus, tap the button to simultaneously send your location to and call the DPS Emergency Communications Center (ECC). The DPS ECC will receive your location in real-time and talk to you on the phone.



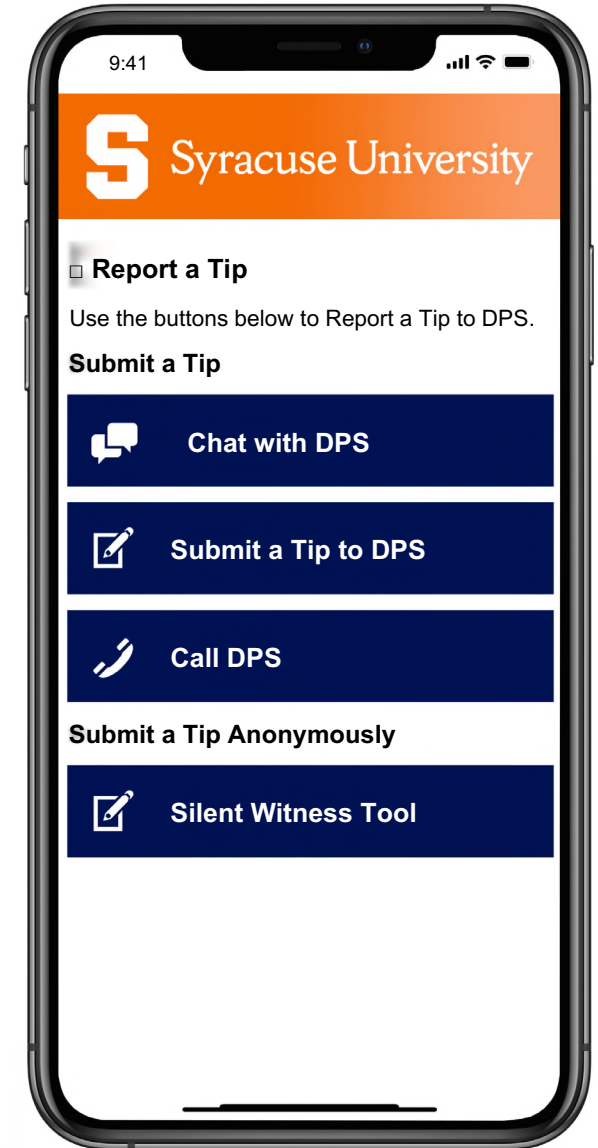
Orange Safe - Safe Walk

- Send your location in real-time to a friend so they can watch you as you walk to your destination. They'll watch you and can trigger a call to emergency services if necessary. It is as simple as sending a text message to a family or friend and they will be sent a link used to follow you. Once you reach your destination, you can simply disconnect.



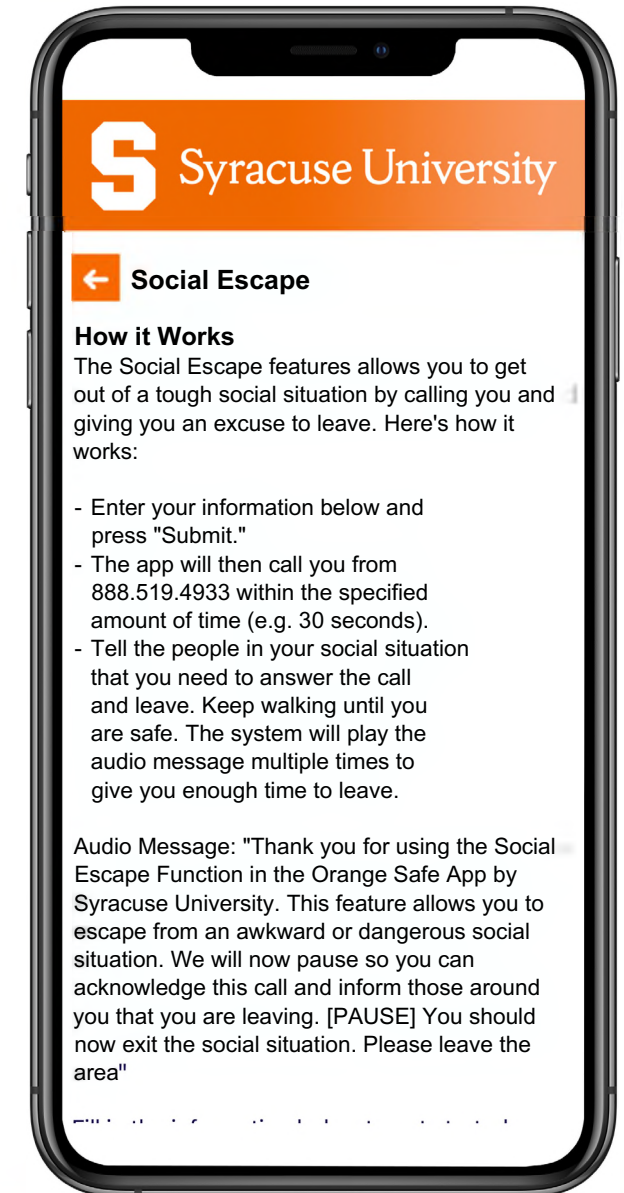
Orange Safe - Report a Tip

- If you see something, say something!
- Click on the submit tips button to report **NON-EMERGENCY** tips (including photos & videos) regarding:
 - Accident
 - Assault/Abuse
 - Disturbance
 - Drugs/Alcohol
 - Harassment
 - Mental Health
 - Suspicious Activity
 - Theft
 - Vandalism
 - Other
- You can choose to submit your tips anonymously!



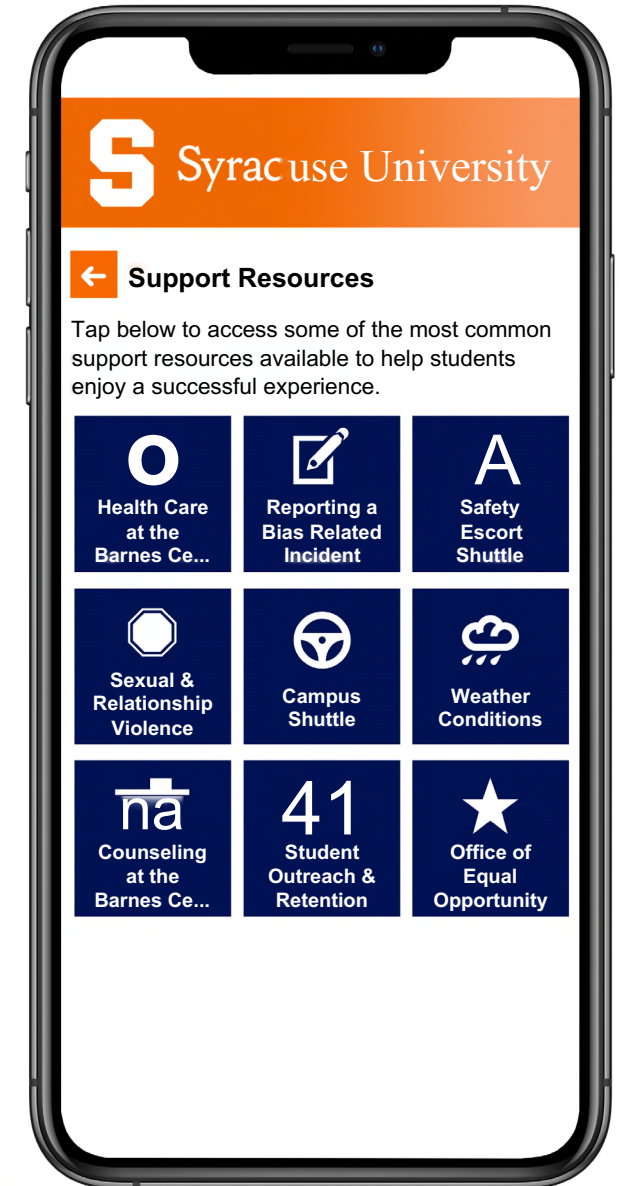
Orange Safe - Social Escape

Get out of a tough social situation by receiving a call and giving you an excuse to leave. It is as simple as entering your phone number in the app and setting how quickly you want to receive the phone call.



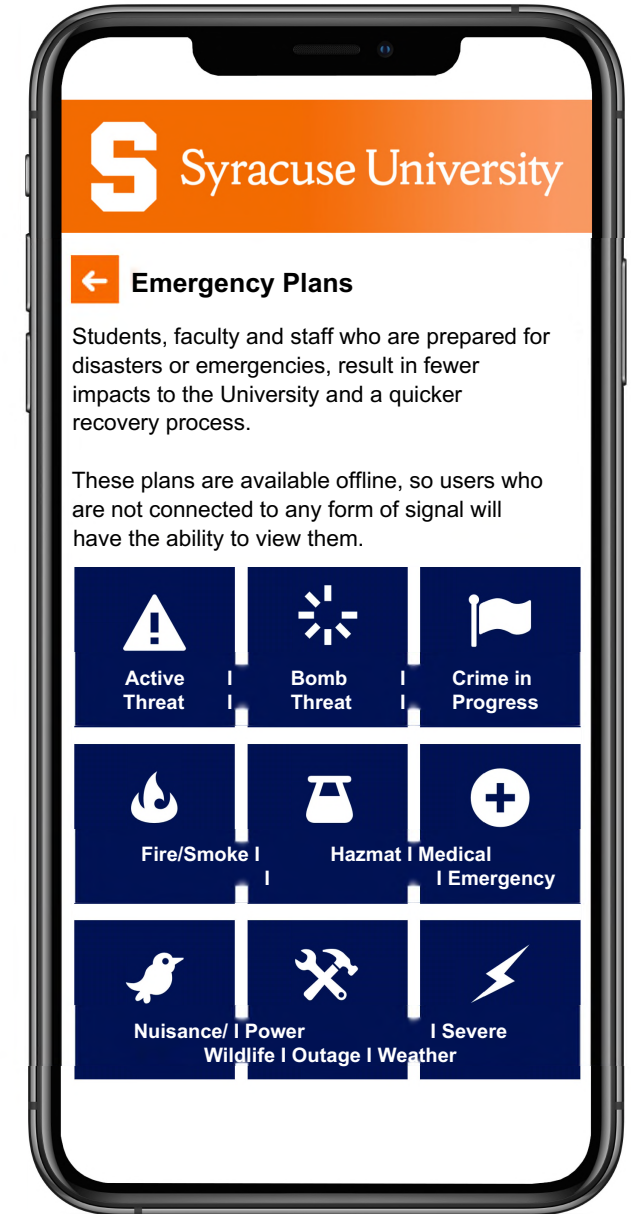
Orange Safe - Support Resources

- Health Services
- Reporting Bias-Related Incidents
- Safety Escort Program
- Sexual and Relationship Violence Resources
- Campus Shuttle
- Weather Conditions
- Counseling
- Student Outreach
- Office of Equal Opportunity



Orange Safe - Emergency Plans

- Do you know what to do in the event of an emergency on campus? Be prepared by reviewing our emergency plans!



Orange Safe - Download Today!

Apple App Store:



Google Play Store:



Orange Alert

Orange Alert

- What is it?
 - Designed to provide rapid crisis notification and instruction to Syracuse University and SUNY ESF students, faculty, and staff.
 - Used only for a crisis in progress—an instance in which there is immediate threat of loss of life or serious physical harm to members of the campus community.

Orange Alert

- Orange Alert Activation - Role of the Faculty and Staff
 - In the event of an Orange Alert activation, members of the Syracuse University community have various roles to undertake.
 - The role of faculty and staff during an Orange Alert activation will likely be considered a leadership role by students and subordinate employees.
 - The following are “Frequently Asked Questions” (FAQ’s) regarding an Orange Alert activation and the role of the faculty and staff leaders:

Orange Alert

- How much information is provided through Orange Alert?
 - Designed to provide immediate direction regarding a potential life threatening incident.
 - Relies heavily on cell phone text messaging and is limited to 140 characters, including spaces.
 - Information will:
 - Be directive in nature;
 - describe the nature of the threat;
 - offer the location of the threat; and
 - provide instruction on what to do, to stay away from the threat.

Orange Alert

- How frequently will Orange Alert updates be sent?
 - While each incident may have different challenges and dynamics, DPS will make every effort to send updated messages of intervals of no more than 30 minutes (15 minutes, if possible).
 - Orange Alert will be used to make an “all clear” announcement when it is safe to resume normal activity.

Lock Down Versus Shelter in Place

Lock Down Versus Shelter in Place - What is the difference?

The term Lock Down

- is intended for a serious life threatening threat to a specific building and buildings in immediate proximity;
- will likely only be used in reference to a specific building;
- will be based on a threat to the people in that building; and
- will result in officers quickly responding to that threat and that building.

The term Shelter in Place

- is intended to direct persons to seek shelter from danger by going indoors and remaining until the incident is clear and
- will not likely result in an officer response directly to the building, as the officers will be responding to the specific location of the threat.

Lock Down/Active Shooter

What do I do in a lock down/active shooter?

(Please visit dps.syr.edu for the latest updates)

- If you, students, and other staff are unable to safely evacuate:
 - Lock door or block entry with anything available.
 - Stay out of the shooter's view away from doors or windows.
 - Turn off the lights and close the blinds.
 - Silence cell phone (including vibrate mode) and remain quiet.
 - Stay out of sight and find cover (i.e. concrete walls, thick desks, filing cabinets, cover that might protect from bullets).
- Follow "RUN, HIDE, FIGHT" guidance on the following slides ...

Run.Hide.Fight

If you can run or escape, RUN...

- Have an escape route and plan in mind.
- Leave your belongings behind.
- Leave promptly using the nearest exit.
- Help others escape, if possible.
- Do not attempt to move the wounded.
- Prevent others from entering an area where the active shooter may be.
- Keep your hands visible.
- Call 911 or DPS when you are safe.
- Meet at the designated meeting location (if established).

Run.Hide.Fight

If you can run, HIDE...

- Hide in an area out of the shooter's view.
- Do not stand by doors or windows.
- Lock door or block entry to your hiding place.
- Turn off the lights and close the blinds.
- Silence your cell phone (including vibrate mode) and remain quiet.
- Keep yourself out of sight and find adequate cover (i.e. concrete walls, thick desks, filing cabinets, cover that might protect you from bullets).

Run.Hide.Fight

If the shooter comes into your room and you can't run or hide, FIGHT...

- Fight as a last resort, and only when your life is in imminent danger; fight for your life.
- Attempt to incapacitate the shooter in any way possible.
- Act with as much physical aggression as possible.
- Improvise weapons or throw items at the shooter.
- Commit to your actions - your life depends on it.

Lock Down/Active Shooter

What will arriving officers do in a lockdown/active shooter?

- Officers will be armed with rifles, handguns, or shotguns.
- Officers might shout commands and might push individuals to the ground for their safety.
- Officers will pass by injured persons until they stop the shooter.
- Officers will not immediately know that you are not a threat to them or others...
 - Make sure your hands are visible to the officer.

Lock Down/Active Shooter

What should I do when officers arrive during a lockdown/active shooter?

- Remain calm and follow the officers' instructions.
 - Put down any items in your hands, immediately raise hands and spread fingers, keeping hands visible at all times.
 - Avoid making quick movements toward officers such as attempting to hold on to them for safety.
 - Avoid pointing, screaming, and/or yelling.
 - Do not ask questions when evacuating.
- Provide any suspect information.
 - Location of shooter and direction of travel.
 - Number of shooters.
 - Physical description of shooters.
 - Number and types of weapons shooter has.

Shelter in Place

What do I do in a “shelter in place”?

- Instruct students and subordinate staff to
 - remain indoors or go indoors if currently outdoors;
 - remain in classrooms/indoor work spaces;
 - follow the directions provided in the alert's message; and
 - lock the doors of the room they occupy if possible.
 - If the door cannot be locked and the incident is reported to be in proximity to the building you are in, barricade the door as much as possible.
 - If a student or staff member refuses to remain in the building or room, strongly encourage them to stay and tell them that the shelter in place order means that it may be very dangerous to leave. Do not use force to hold a person back.

Shelter in Place

To whom should we allow building access during a “shelter in place”?

- If a student, faculty, or staff member is attempting to gain access into a locked building during a shelter in place or lockdown:
 - make every effort accommodate the individual who is seeking refuge;
 - if in doubt, ask for identification, in the form of a Syracuse University/ESF identification card;
 - if you are uncertain whether or it is safe to grant the individual access, contact DPS as soon as possible; and
 - if it appears that the person is the violent suspect (armed, threatening, etc.), do not let them in and call DPS.

Questions?

For more information, visit dps.syr.edu.